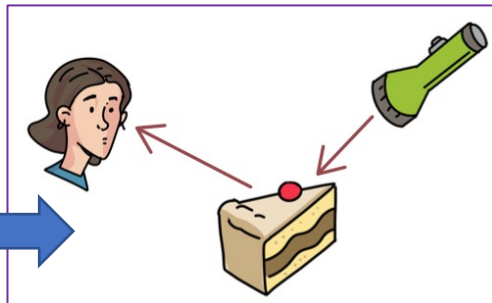


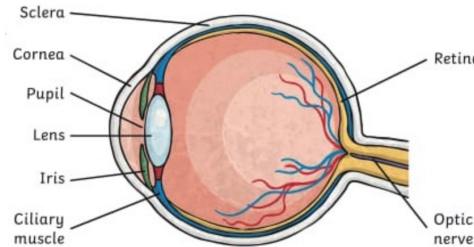
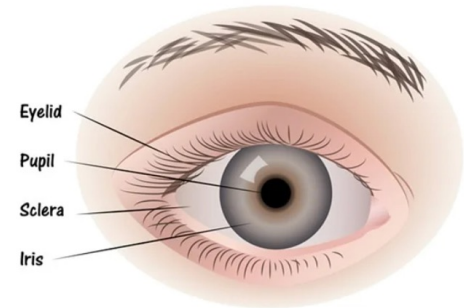
Year 5 and 6 Science Knowledge Organiser - Light

Subject Specific Vocabulary	Meaning
independent variable	The part of the experiment that is being changed.
dependent variable	The part of the experiment that you are testing.
observation	When you look closely at what is happening during an experiment.
hypothesis	A scientific prediction that you will make.
fair test	What you will do to make sure your results are reliable.

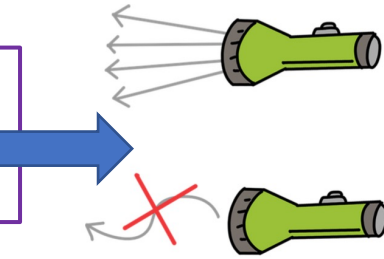
The **arrows** show the **direction** the light is travelling. The **light travels** from the **light source** (the torch), **reflects** from the object (the cake) and travels to our eyes.



The Eye - Inside and Outside



Light travels from a **light source** in a **straight line** unless it **refracts** through two different **states of matter**.



Light Scientific Vocabulary	Meaning
light ray	Light travelling in one direction from a light source.
light beams	A collection of light rays
reflection	When light bounces off an object into the eye.
straight line	The way light travels.
refraction	The change in the speed of a light while it passes through different states of matter.
absence	When there is no light present
states of matter	solids, liquids and gases
eye	The organ we use for sight.
optic nerve	The part of the eye that sends images to the brain.
dilate	When the pupil in the eye gets bigger in the dark.

What I Already Know...

- A light source can be natural or man-made.
- Light can act differently when it is shined on different materials.
- Shadows are formed when there are patches of shade where light does not reach.
- A rainbow is an arc of colour in the sky that can be seen when the sun shines through falling rain.

Shadows have the same shape as the objects that cast them.

